

# Job Aid: Viable Air and Surface Sampling

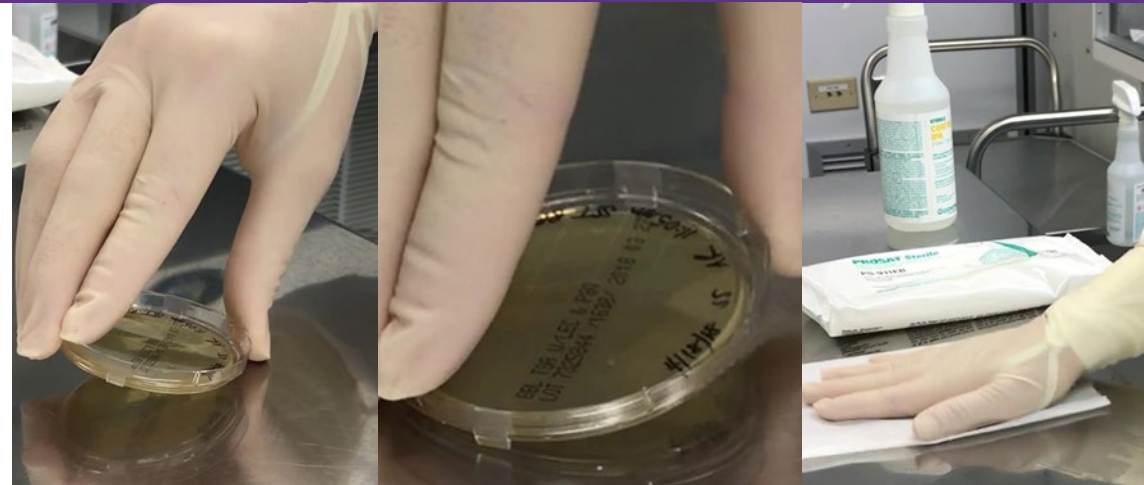
## Air Sampling

1. Remove the sampling head.
2. Load using the 3-finger technique.
3. Remove lid. Place sampling head.
4. Start sampler.
5. When complete, unscrew head.
6. Remove head, check for dimpling, replace plate lid.
7. Remove using 3-finger technique.



## Surface Sampling

1. Keeping agar facing down, remove lid of plate.
2. Place edge of plate on the surface to be sampled.
3. Sample using rolling motion.
4. Keeping agar facing down, replace lid on plate.
5. Wipe sampled area with EPA-registered one-step disinfectant.\*



## Reminders

- Always keep your hand to the side when handling the sampling head to reduce risk of contamination.
- Wear sterile gloves when sampling and sanitize gloves with sterile 70% IPA (sIPA) frequently.
- Minimize the amount of time the sample plate is exposed when removing and replacing the lid.
- Label the plate with the type of sample, location code, date, time, and initials.

\*All agents used inside the PEC must be sterile.

© 2025 TRC is a registered trademark of Therapeutic Research Center. TRC and all associated names and service marks, including TRC, are restricted and reserved for Therapeutic Research Center use. [TRCHealthcare.com](http://TRCHealthcare.com)