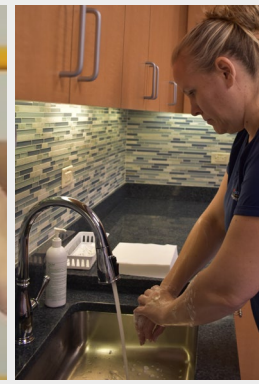
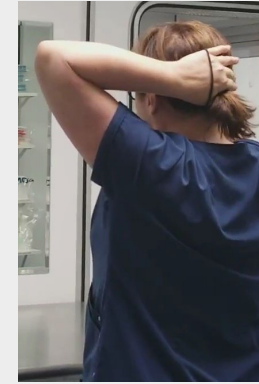


Before entering SCA

1. Change into scrubs and facility-dedicated shoes
2. Use restroom; remove makeup, jewelry, and extra clothing; tie up hair
3. Clean personal glasses with EPA-registered one-step bactericidal disinfectant cleaner wipe for frames and lens cleaner for lenses
4. Perform hand hygiene, including a 30-second lather to the elbows, after using nail pick on wet, lathered hands; dry hands with low-lint wipes



Inside SCA but outside perimeter line

5. Enter SCA
6. Don a face mask with folds down on outside, bend nose bar, pull down under chin; no gaps; beard cover over mask if goatee
7. Don head cover (bouffant cap) over ears *and* hood if full beard, hijab, or other headdress or if hair not contained by bouffant
8. Apply alcohol-based hand rub to nails, hands, and wrists
9. Don gown (do not put thumb loops in place)
10. Don shoe covers one at a time, stepping over perimeter line



Clean side anteroom

11. Obtain sterile gloves; remove from outer package at empty, clean counter surface
12. Apply alcohol-based hand rub to nails, hands, and wrists
13. When dry, put thumb loops in place and don sterile gloves
14. Sanitize gloves with sterile IPA (unless initial GFT scheduled)

